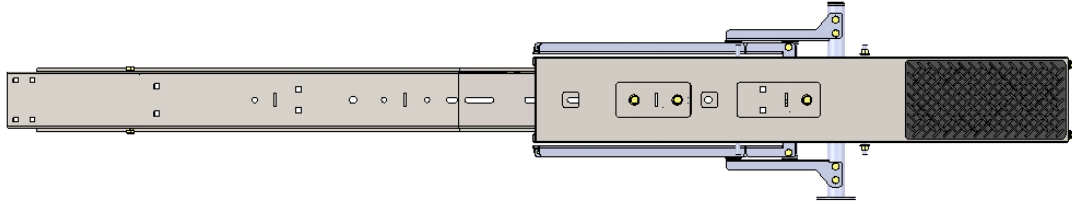
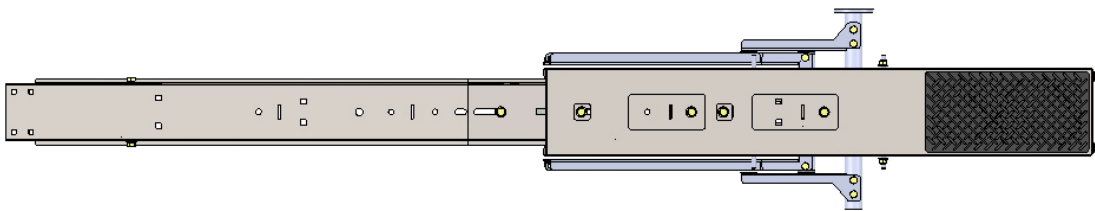




47993 Parts List



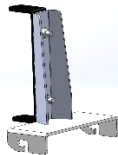
Front Bow Assy.(1)



Rear Bow Assy.(1)



Mount Foot (4)



Ladder Hook (2)



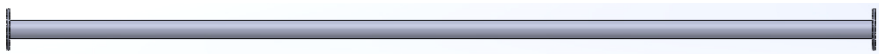
Ladder Stop (2)



Backing Plate (4)



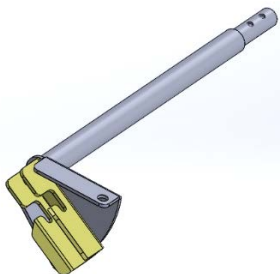
Rubber Pad (8)



Torque Tube (1)



Ladder Pan Stiffener (1)



Handle Assy. (1)



Handle Removable (1)

47993 Installation Instructions

Step 1

Measure the distance between the mounting locations desired to insure the proper slots are use when bolting the feet into the bows. Bolt feet into Front and Rear Bow assemblies as shown using 3/8"x3/4" bolts with lock washers and flat washers. Now mount the rear bow assembly using the 40993 instructions. The mounting feet go directly to the Service body with the "Rubber Pads" on both sides to prevent leaks (as shown below). Be sure to mount the rear bow back far enough so the handle will clear the back of the Service body.

